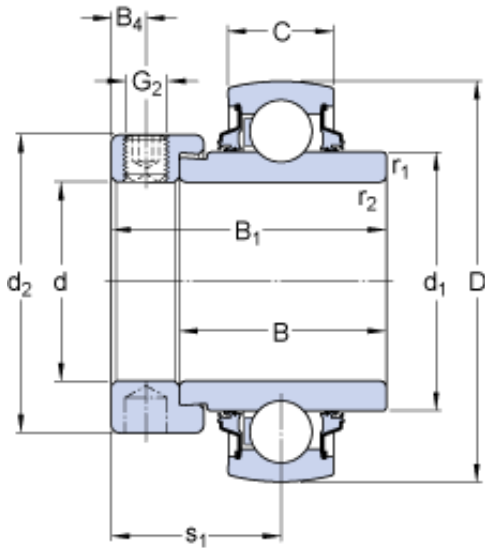




BEARINGS(UK)LTD.



34.925 mm x 72 mm x 37.6 mm skf YELAG
207-106 Insert bearings (Y-bearings)

Bearing No. YELAG 207-106

YELAG 207-106 Bearing 2D drawings and 3D CAD models

Size	72x34.925x51.1 mm
Bore Diameter	72 mm
Outer Diameter	34,925 mm
Width	51,1 mm
d	34.925 mm
D	72 mm
B ₁	51.1 mm
C	19 mm
d ₁	46.1 mm
d ₂	51.1 mm
B	37.6 mm
B ₄	6.75 mm
r _{1,2} - min.	1 mm
s ₁	32.3 mm
Basic dynamic load rating - C	25.5 kN
Basic static load rating - C ₀	15.3 kN
Fatigue load limit - P _u	0.655 kN
Limiting speed with shaft tolerance h6	1100 r/min
Calculation factor - f ₀	14
Mass bearing	0.52 kg
Thread - G ₂ - 3/8-24 UNF	3/824 UNF
Hexagonal key size for grub screw - H	4.762 mm



BEARINGS(UK)LTD.

B_1	51.1 mm
d_1	46.1 mm
d_2	51.1 mm
B_4	6.75 mm
$r_{1,2}$ min.	1 mm
s_1	32.3 mm
Basic dynamic load rating C	25.5 kN
Basic static load rating C_0	15.3 kN
Fatigue load limit P_u	0.655 kN
Limiting speed ¹⁾	1100 r/min
Calculation factor f_0	14
Mass complete bearing	0.54 kg
Thread grub screw G_2	3/8-24 UNF
Hexagonal key size for grub screw N	4.763 mm
Recommended tightening torque for grub screw	16.5 N · m